

ISBN 978-602-1582-22-0



**PROCEEDING
INTERNATIONAL CONFERENCE**

THE 1ST
WARMADewa UNIVERSITY
INTERNATIONAL CONFERENCE ON
ARCHITECTURE AND CIVIL ENGINEERING

**SUSTAINABILITY
DESIGN
AND
CULTURE**

DENPASAR, OCTOBER 20TH, 2017

WARMADewa UNIVERSITY PRESS



PROCEEDING INTERNATIONAL CONFERENCE

THE 1ST
WARMADEWA UNIVERSITY
INTERNATIONAL CONFERENCE ON
ARCHITECTURE AND CIVIL ENGINEERING

SUSTAINABILITY DESIGN AND CULTURE

DENPASAR, OCTOBER 20TH, 2017

WARMADEWA UNIVERSITY PRESS
2017

Scientific Committee :

1. Prof. Tasuku Tanaka, Ph.D. (Graduate School of Science and Engineering Yamaguchi University, Japan).
2. Prof. Dr. Ir. Agus Taufik Mulyono, M.T., ATU., IPU. (Department of Civil Engineering and Environment, Gajah Mada University, Indonesia).
3. Prof. Wimpy Santosa, Ph.D (Faculty of Engineering Parahyangan Catholic University, Bandung, Indonesia).
4. Dr. Takahiro Ozawa (Center for Remote Sensing and Ocean Sciences (CReSOS) Udayana University, Denpasar, Bali).
5. Dr. Ir. Ahmad Rifa'i, MT. (Department of Civil Engineering and Environment, Gajah Mada University, Indonesia).
6. Dr. Ngakan Ketut Acwin Dwijendra, ST., MA. (Campus of Bali Design School (STD Bali)).
7. Prof. Dr. Ir. I Wayan Runa, MT. (Faculty of Engineering Warmadewa University, Denpasar, Bali).
8. Dr. Ir. I Gusti Agung Putu Eryani, MT. (Faculty of Engineering Warmadewa University, Denpasar, Bali).
9. Dr. Ir. I Wayan Parwata, MT. (Faculty of Engineering Warmadewa University, Denpasar, Bali).

Katalog dalam Terbitan : Perpustakaan Nasional Republik Indonesia
 The 1st Warmadewa University International
 Conference on Architecture and Civil Engineering
SUSTAINABILITY, DESIGN AND CULTURE
 Denpasar, 2017, ix, 324 pages, 21.0 x 29.7 Cm



Hak Cipta Dilindungi Undang-undang
 UU RI No. 19 Tahun 2002

Editor : 1. I Kadek Merta Wijaya, S.T., M.Sc.
 2. Putu Aryastana, S.T., M.Eng., M.Si.
 3. Made Suryanatha Prabawa, S.T., M.Ars.

Cover Design : Ni Putu Ratih Pradnyaswari Anasta Putri, S.T., M.Sc.

First Published : October 2017

Copyright : Warmadewa University Press

Editor Address :
 Jalan Terompong No. 24, Gedung D Lantai 2,
 Tanjung Bungkak, Denpasar 80234, Bali
 Telp. (0361) 223858; Fax. (0361) 225073
 Web: www.warmadewa.ac.id
 E-mail: univ-warmadewa@yahoo.co.id

Committee

The 1st Warmadewa University International Conference on Architecture and Civil Engineering SUSTAINABILITY, DESIGN AND CULTURE

Board of Committee:

Dr. Drs. A. A. Gede Wisnumurti, M.Si.
Prof. dr. Dewa Putu Widjana, DAP&E.Sp.Park.

Person in Charge:

Prof. Dr. Ir. I Wayan Runa, M.T.

Chairman:

Putu Aryastana, S.T., M.Eng., M.Si.

Members of Committee:

I Wayan Widanan, S.T., M.P.M.
Ni Komang Armaeni, S.T., M.T.
I Gede Surya Darmawan, S.T., M.T.
I Kadek Merta Wijaya, S.T., M.Sc.
Ir. I Nyoman Surayasa, M.Si.
A. A. Gede Raka Gunawarman, S.T., M.T.
Putu Ika Wahyuni, S.T., M.Si., M.T.
Ir. I Wayan Jawat, M.T.

TABLE OF CONTENTS

Introduction	iii
Welcoming Speech by Rector of Warmadewa University	iv
Chairman Report	v – vi
Table of Contents	vii – ix
A. Keynote Speaker	
1. Indonesian Sea Observed By Satellites <i>Prof. Tasuku Tanaka, Ph.D.</i>	1 – 2
2. Hope To The Future: Indicators For Sustainable Transportation Management In Indonesia <i>Prof. Dr. Ir. Agus Taufik Mulyono, M.T., ATU., IPU.</i>	3 – 13
3. Sustainability Viz –A-Viz Architecture & Culture: Case Of Diverse India <i>Anoop Kumar Sharma</i>	14 – 15
B. Theme I : Sustainability	
1. A Sustainable Agriculture Development in Kedungu Resort Project, Tabanan Bali <i>Ngakan Ketut Acwin Dwijendra, I Wayan Yogik Adnyana Putra</i>	16 – 21
2. Arrangement Model of Saba River Estuary Area Based on Tourism Enviroment for Water Conservation in Buleleng Regency <i>I Gusti Agung Putu Eryani</i>	22 – 29
3. Identification of Physical Changes of Pre- and Post-Reclamation Land in Serangan Island <i>I Gede Surya Darmawan, I Wayan Wirya Sastrawan</i>	30 – 36
4. Impact Resistance of High Strength Self Compacting Concrete With Steel Fiber <i>Gabriella Agnes Luvena S., M. Fauzie Siswanto, Ashar Saputra</i>	37 – 44
5. Mix Design of High Strength SCC with Polypropylene Fiber based on Flow Mortar Mix <i>Kristyan Hari Subangkit, Imam Satyarno, Andreas Triwiyono</i>	45 – 52
6. Modelling as an Approach to Understand Resilience of Urban Kampung <i>Imelda Irmawati Damanik, Bakti Setiawan, Sani Roychansyah, Sunyoto Usman</i>	53 – 61
7. Performance Based Contract Risk Relationship Analysis in Bojonegoro-Padangan Road Project <i>Eko Prihartanto, M.Djaya Bakri</i>	62 – 68
8. Priority of ICT Implementatation at The Largest Bus Terminal in Bandung, Indonesia <i>A. Caroline Sutandi, Wimpy Santosa, Y. Frans Winanto</i>	69 – 79
9. Sustainable Tourism and Fire Safety of Accommodation Facilities in Tourism Villages <i>I Dewa Gede Agung Diasana Putra, Anak Agung Gde Agung Yana, Ngakan Ketut Acwin Dwijendra</i>	80 – 84
10. Thermal Performance of Wide Span Middle-Rise Building in Surabaya (Case Study: Gedung G ITATS) <i>Dian P. E. Laksmiyanti, Poppy F. Nilasari</i>	85 – 90

C. Theme II : Design

- | | | |
|-----|--|-----------|
| 1. | Behavior of Nailed-Slab System on Peat Soil Under Loading
<i>Aazokhi Waruwu, Hary Christady Hardiyatmo, Ahmad Rifa'i</i> | 91 – 97 |
| 2. | Changes of Geotechnical Properties of Waste Embankment for Stability Analysis at Piyungan Disposal Site
<i>I Wayan Ariyana Basoka, Ahmad Rifa'i, Fikri Faris</i> | 98 – 105 |
| 3. | Coastline Change Analysis in Buleleng Regency by Using Satelite Data
<i>Putu Aryastana, I Made Ardantha, Adrianto Eka Nugraha, Kadek Windy Candrayana</i> | 106 – 113 |
| 4. | Comparative Analysis of Effectiveness of "Yellow Box Junction" in The City of Jakarta and Denpasar
<i>Cokorda Putra Wirasutama, Tjokorda Istri Praganingrum</i> | 114 – 119 |
| 5. | Comparison of Single Bored Pile Bearing Capacity Based on CPT and SPT
<i>I Gusti Ngurah Putu Dharmayasa</i> | 120 – 126 |
| 6. | Development Taman Prestasi Surabaya as Tematic Park Reviewed from The User Behavior and The Nature of Space
<i>Sigit Hadi Laksno, Felicia Trua Nuciferani</i> | 127 – 131 |
| 7. | Durability of Asphalt Concrete Mixture Using Lompoto'o Tras as Fine Aggregate
<i>Frice L. Desei, Ayuddin</i> | 132 – 138 |
| 8. | Geotechnical Characteristics of Pumice for Reduce Liquefaction Potential
<i>Muhajirah, Ahmad Rifa'i, Agus Darmawan Adi</i> | 139 – 146 |
| 9. | Geotechnical Properties and Characteristics of Metamorphic Rock Mass on Poboya Gold Mine
<i>Sriyati Ramadhani, Ahmad Rifa'i, Kabul Basah Suryolelono, Wahyu Wilopo</i> | 147 – 154 |
| 10. | Influence of Volcanic Ash and Lime on Resilient Modulus for Subgrade
<i>Devi Oktaviana Latif, Ahmad Rifa'i, Latif Budi Suparma</i> | 155 – 159 |
| 11. | Landslide Hazards Due to Rainfall Intensity in The Caldera of Mount Batur, Bali
<i>I Nengah Sinarta, Ahmad Rifa'I, Teuku Faisal Fathani, Wahyu Wilopo</i> | 160 – 167 |
| 12. | Optimization of Thermal Comfort in I Gusti Ngurah Made Agung City Park Design in Denpasar
<i>I Wayan Wiryasastrawan, I Gede Surya Darmawan</i> | 168 – 175 |
| 13. | Spatial Distribution of Mercury Concentration in Traditional Gold Mining of Buladu
<i>Marike Mahmud, Beby Banteng, Frice Desei, Fitriyane Lihawa, Yanti Saleh</i> | 176 – 182 |
| 14. | Steel Brace Damper with Progressive Failure Mechanism
<i>I. P. Ellsa Sarasantika, H.L. Hsu</i> | 183 – 187 |
| 15. | Strength and Stiffness Behavior of Concrete Modular House
<i>Yosafat Aji Pranata, Anang Kristianto, Kumbara Kamajaya Cahya Hermawan, Azka Rysdianto</i> | 188 – 192 |
| 16. | The Behavior of Steel Structure Exposed to Fire : A Review
<i>Ni Komang Ayu Agustini, Andreas Triwiyono, Djoko Sulistyono, Suyitno</i> | 193 – 197 |
| 17. | The Effect of Water Content Change in Pluto-Volcanic Subsurface Slope Stability Based on Limit Equilibrium and Finite Element Method
<i>Indriati Martha Patuti, Ahmad Rifa'I, Kabul Basah Suryolelono, Suprpto Siswosukarto</i> | 198 – 205 |
| 18. | The Influence of Capital Composition to Real Estate Investment Risk in Gianyar by Using @Risk Program
<i>Ni Komang Armaeni, Ni Wayan Meidayanti Mustika, Anak Agung Sagung Dewi Rahadiani</i> | 206 – 214 |

- | | | |
|-----|--|-----------|
| 19. | The Key Success of Commercial Building Construction : A Case Study on Charcara Restaurant Bali
<i>I Wayan Widanan</i> | 215 – 220 |
| 20. | Risk Variables in Collaboration of Private Government (PPP) for Toll Road Contacts
<i>Putu Ika Wahyuni, Wateno Oetomo, Sarwono Hardjomuljadi, Koespiadi</i> | 221 – 228 |
| 21. | Triplet Confinement Induced High Efficiency in Single Layer Doping of Phosphorescent Organic Light-Emitting Diode
<i>Agus Putu Abiyasa, I Wayan Sukadana, I Wayan Utama, I Wayan Sugrayasa, Yoga Divayana</i> | 229 – 235 |

D. Theme III : Culture

- | | | |
|-----|--|-----------|
| 1. | Architecture Knowledge in Manuscript of Lontar Asta Kosala Kosali (In the Perspective of Architecture is a Construction Process)
<i>I Nyoman Nuri Arthana, Josef Prijotomo, Murni Rachmawati, I Made Suwirya</i> | 236 – 241 |
| 2. | Cultural Landscape and Conservation of Balinese Cemetery, Meaning and Threatening
<i>Ni Made Yudiantini</i> | 242 – 246 |
| 3. | Cultural Practice of Traditional Security Officers (<i>Pecalang</i>), Tourism and The Meaning of the Local Wisdom Value in Bali
<i>I Wayan Wesna Astara</i> | 247 – 251 |
| 4. | Form and Meaning of Aesthetic Elements on Architecture of Traditional House (Case Study of Traditional House in Bayung Gede, Bangli)
<i>Siluh Putu Natha Primadewi, I Gede Ngurah Sunatha, Ni Putu Suda Nurjani</i> | 252 – 259 |
| 5. | Local Wisdom in Environmental Management in Tenganan Pegringsingan, Karangasem, Bali
<i>I Gusti Bagus Suryawan, Ni Made Jaya Senastri</i> | 260 – 267 |
| 6. | Proportion Identification of Candi Tebing Gunung Kawi in Tampaksiring, Gianyar - Bali
<i>A.A. Gede Raka Gunawarman, I Kadek Merta Wijaya</i> | 268 – 274 |
| 7. | Soundscape Mapping in Heritage Area (Case study : ‘Legi’ Market, Kotagede, Yogyakarta, Indonesia)
<i>Patricia P. Noviandri</i> | 275– 282 |
| 8. | The Influence of Cultural Life on Spatial System in Tenganan Pagringsingan, Karangasem - Bali.
<i>I Wayan Runa, I Nyoman Warnata</i> | 283 – 293 |
| 9. | The Execution of Bali Architecture in Public Buildings as A Cultural Tourism Potential of The City of Denpasar in The Era of Globalization
<i>Made Novia Indriani, Cornelia Hildegardis</i> | 294 – 303 |
| 10. | The Roles of Market Orientation and Knowledge Competency on The Relationship Between Innovation and Business Performance
<i>Ni Made Wahyuni, I Made Wardana, Gusti Ayu Ketut Giantari</i> | 304 – 308 |
| 11. | Traditional Concept of Space and Building in Puri Agung Karangasem, Bali
<i>Agus Kurniawan, I Wayan Diksa</i> | 309 – 316 |
| 12. | Typology of <i>Angkul-Angkul</i> Forms at Balinese Ethnic Houses in Denpasar
<i>I Kadek Merta Wijaya</i> | 317 – 324 |

COASTLINE CHANGES ANALYSIS IN BULELENG REGENCY BY USING SATELLITE DATA

Putu Aryastana¹, I Made Ardantha², Adrianto Eka Nugraha³, Kadek Windy Candrayana⁴

^{1,2}Department of Civil Engineering, Warmadewa University, Jl. Terompong No. 24, Denpasar, Indonesia

³Alumnus of Department of Water Resources Engineering, Brawijaya University, Jl. MT. Haryono No.167. Malang, Indonesia

⁴Master Student Department of Civil Engineering, Udayana University, Jl. PB Sudirman, Denpasar, Indonesia
 aryastanaputu@yahoo.com¹

ABSTRACT

The study of monitoring and analysis of coastline changes has been widely used satellite imagery. Satellite data that is often used in monitoring studies and analysis of coastline changes are Landsat, Quickbird, Allos dan IKONOS. The aim of study is to determine an average of coastline change in Buleleng regency by using two kind satellite are SPOT 5 in 2009 has a spatial resolution of 10 m (multispectral) and SPOT 6/7 in 2015 has a spatial resolution 1.5 m. This research contributes to local government and central government as a database in decision making for coastal area management. The result of analysis shows the average of coastline change in Buleleng Regency is 8.64 m.

Keywords: *buleleng; coastline; satellite.*

A. INTRODUCTION

The coastline is defined as the boundary between land and surface water. In the dynamic process there are several factors that influence the shoreline changes: hydrology, geology, climate and vegetation. Therefore it is necessary to update the map of shoreline change that is done continuously. This renewal is needed to find out the information on coastal resource management, coastal protection and also for sustainable development planning in the coastal area (Guariglia, et al., 2006).

Coastline mapping can be defined by direct field measurement, aerial photography analysis and remote sensing analysis by using satellite imagery (Guariglia, et al., 2006). Technological developments have led to the use of satellite imagery in coastline change analysis.

Satellite data were utilized for coastline change analysis in many researches. For example Kuleli, Guneroglu, Karsli, & Dihkan (2011) used multi-temporal Landsat images and Digital Shoreline Analysis System (DSAS) to analyse shoreline change along the coastal Ramsar wetlands of Turkey. Landsat MMS, Landsat TM and SPOT-4 were utilised to estimate the spatio-temporal changes that occurred in the coastal zone between Damietta Nile branch and Port-Said between 1973 and 2007 (El-Asmar & Hereher, 2011). Landsat MSS image of 1979, Landsat TM and

ETM+ images of 1990 and 2000, SPOT image of 2003 and the topographic map 1:100,000 of 1966 and a nautical map scale 1:150,000 of 2003 were utilized to analysis coastline change detection of the Pearl River Estuary, China (Li & Damen, 2010). SPOT image was used to evaluate shoreline in Progreso, Yucatán, México (Rubio, Huntley, & Russell, 2015). Landsat imagery between 2000 and 2014 were utilized to evaluate of annual mean shoreline position at El Saler Valencia, Spain (Caballer, García, Pascual, Beser, & Vázquez, 2016). Combination aerial photographs and satellite imagery (IKONOS, Quickbird, Worldview2 and GeosEye-1) were used to interpreted shoreline change at Wotje Atoll, Marshall Islands (Ford, 2013). Aryastana, Eryani, & Candrayana (2016) were used SPOT 5 and SPOT 6/7 to analysis the average of coastline changes and average of erosion rate from 2009 and 2015 at Gianyar Regency, Bali Province, Indonesia. Post-processing result of Envisat satellite altimetry data was evaluated in this study to generate precise sea level height and sea level rise as the bases for the coastal area potential flood mapping, with case study of Buleleng Regency, Bali, Indonesia. In the post-processing stage, three types of geophysical corrections that greatly affect the accuracy of altimetry data in coastal areas were used, namely: tide, tropospheric and ionospheric corrections (Heliani, Putra, & Subaryono, 2014).

The use of remote sensing imagery such as Landsat and Geographic Information System (GIS) plays a very important role as a cheap and easy method of provide data on coastal area coverage and dynamics therein (Kasim, 2012). The objective of this research is to analysis the average of coastline changes in Buleleng Regency based on SPOT 5 and SPOT 6/7 image.

B. STUDY AREA

The research sites were conducted along the coast in Buleleng Regency (Figure 1). Buleleng Regency is located in the northern part of Bali, geographically located at 8°03'40"-8°23'00" LS and 114°25'55"-115°27'28" BT. It has a coastal length of about 144 km stretching from west to the east of Bali island (BPS, 2015). It is the one of the regency in the Bali Province with the longest coastline.

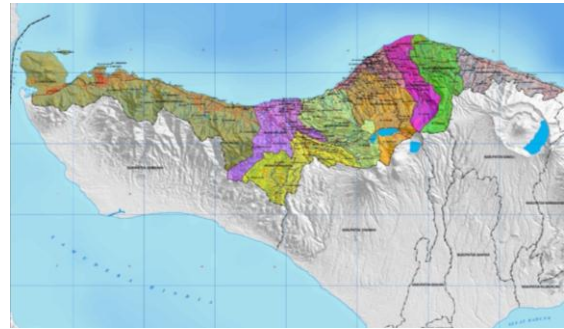


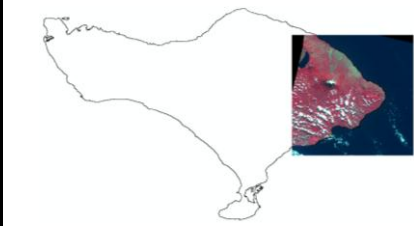
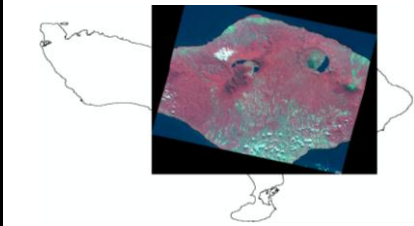


Figure 1. Study Area (Anonim, 2016)

C. DATA AND METHODS

1. Satellite Data

Satellite imagery was utilized are SPOT 5 image in 2009 has a spatial resolution of 10 m (multispectral) and SPOT 6/7 image in 2015 with resolution up to 1.5 m, which in detail can be seen in Table 1.

Table 1. Image Data Specification

No	Satellite Imagery	Resolution (m)	Acquired Date	Image
1	SPOT 5	10	04/12/2009 time 02:32:45	
2	SPOT 5	10	06/14/2009 time 02:22:45	
3	SPOT 5	10	06/15/2008 time 02:20:59	
4	SPOT 6	1.5	03/19/2015 time 09:18:35	

No	Satellite Imagery	Resolution (m)	Acquired Date	Image
5	SPOT 6	1.5	02/16/2015 time 09:08:32	
6	SPOT 7	1.5	07/02/2015 time 09:11:00	

2. Image Processing

Image processing consists of image cropping, radiometric correction, geometric correction, band combination and coastline digitization (Figure 2).

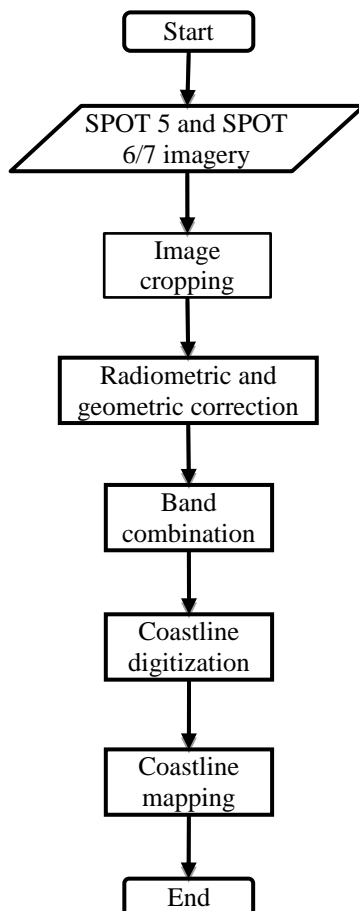


Figure 2. Flowchart of Image Processing

a. Image cropping

The image cropping was needed to get the Area of Interest (AOI). It aims to decrease the file size, so that the process will be fast comparing with image without cropping (Figure 3).

b. Radiometric correction

Radiometric correction of remotely sensed data normally involves the processing of digital images to improve the fidelity of the brightness value magnitudes. The main purpose for applying radiometric corrections is to reduce the influence of errors or inconsistencies in image brightness values that may limit one's ability to interpret or quantitatively process and analyze digital remotely sensed images (Stow, 2017). Raw data processed using ER-Mapper (Figure 4).

c. Geometric correction

Geometric corrections are made to correct the inconsistency between the location coordinates of the raw image data, and the actual location coordinates on the ground or base image. Several types of geometric corrections include system, precision, and terrain corrections. Geometric correction is necessary to preprocess remotely sensed data and remove geometric distortion (Dave, Joshi, & Srivastava, 2015). The actual coordinates on the ground were using Bench Mark (BM) spread in Buleleng Regency (Table 2).

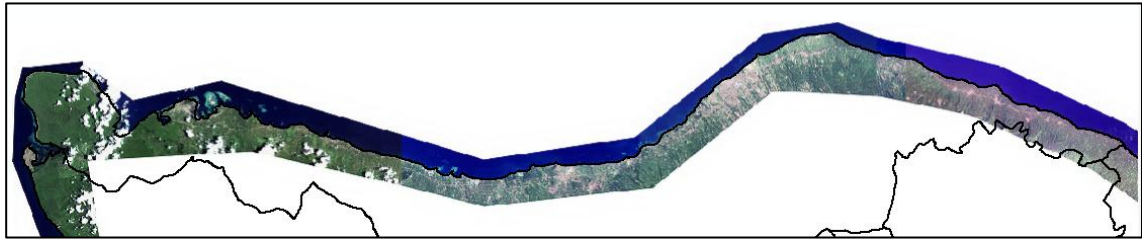


Figure 3. Result of Image Cropping



Figure 4. Result of Radiometric Correction

Table 2. BM Coordinates in Buleleng Regency

Coastal Area	BM Code	Coordinates		
		X	Y	Z
Gondol-Celukan Bawang	BM1-TK	246962.00	9098244.00	3.520
Gondol-Celukan Bawang	BM2-TK	247024.31	9098203.33	3.520
Gondol-Celukan Bawang	BM3-TK	248087.17	9097875.17	2.850
Gondol-Celukan Bawang	BM7-TK	251770.41	9096436.74	2.680
Gondol-Celukan Bawang	BM14-TK	258823.15	9094445.08	2.250
Celukan Bawang-Pengastulan	PCB-11	262629.88	9093707.97	3.626
Celukan Bawang-Pengastulan	PCB-06	267123.55	9093959.40	3.156
Celukan Bawang-Pengastulan	PCB-03	269437.04	9094875.98	2.289
Celukan Bawang-Pengastulan	PCB-01	271882.09	9095087.64	2.809
Kubutambahan	KT-1	302534.00	9107015.00	4.113
Kubutambahan	KT-3	300758.01	9107997.78	4.212
Kubutambahan	KT-4	299205.46	9108357.64	3.874
Kubutambahan	KT-6	296856.32	9108068.34	3.125
Seririt-Kaliasem	SKA-10	272938.98	9094830.69	3.487
Seririt-Kaliasem	SKA-7	276471.52	9095013.42	3.238
Seririt-Kaliasem	SKA-4	279407.63	9095623.57	2.611
Seririt-Kaliasem	SKA-1	282033.75	9097051.88	3.053
Tembok-Tianyar	BMT-1	330053.79	9096859.57	3.911
Tembok-Tianyar	BMT-3	331531.53	9095518.69	3.943
Tembok-Tianyar	BMT-5	333109.79	9095121.99	3.421
Tembok-Tianyar	BMT-7	335277.93	9093320.71	3.391
Tembok-Tianyar	BMT-11	337731.80	9091562.00	3.725
Kalisada	KS-6	265372.17	9093414.77	2.953
Kalisada	KS-1	267673.59	9094183.88	2.683

Source: Balai Wilayah Sungai Bali Penida

d. Band Combination

Multispectral data are composed of several different bandwidths of image data taken at the same time. Using these either alone or combined enables discrimination between many different cover and target types (Belliss, 2017). SPOT has two band combinations: RGB-123 and RGB-321. Band

combination RGB-321 was utilized to process image data.

e. Coastline digitization

Coastline is obtained by manual digitization of image that has the MNDWI (Modified Normalized Difference Water Index) transformation process. Digitization process is done by using ArcGIS (Figure 5).

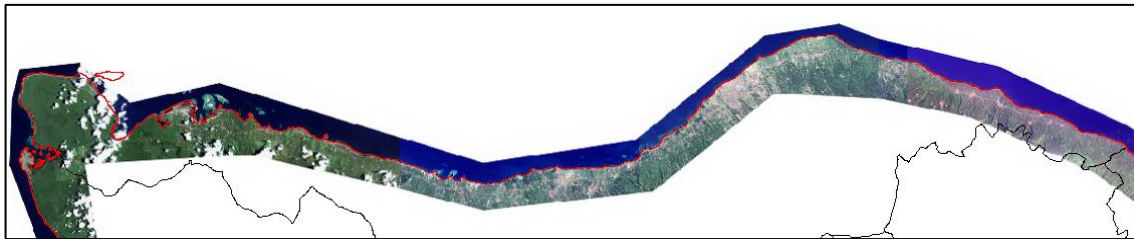


Figure 5. Coastline Digitization of SPOT Image of 2015

3. Waterline Correction

The 1985 national tidal height datum was used as the local tidal datum (h) that can be estimated from the hydrodynamic model. It was assumed that the beach moves offshore or onshore with the same bottom profile (Huang et al., 1994 in Liu, Huang, Qiu, & Fan, 2013). Thus, the waterlines were shifted to the tidal datum-based shoreline position based on the equiangular triangle theory. The shifting process and the bottom slope calculation were carried out by sectional calculation (Thieler et al., 2009 in Liu, Huang, Qiu, & Fan, 2013). The shifted distance, *Y*, was estimated by equation (Aryastana, Eryani, & Candrayana, 2016):

$$Y = \left(T_k - \left(\frac{T_k}{T_b} \times T_x \right) \right) \times \tan \phi \tag{1}$$

Where:

- Y* : The shifted distance
- T_k* : Sectional HWL (High Water Level)
- T_b* : Benoa Harbor HWL
- T_x* : Tidal datum where the image was acquired
- Tanφ* : coastal slope

The tidal datum was utilized to analysis the waterline shifting process is from Benoa harbor and the data when satellite was acquired time (Table 3). The sectional of coastal slope in Buleleng Regency can be seen in Figure 6.

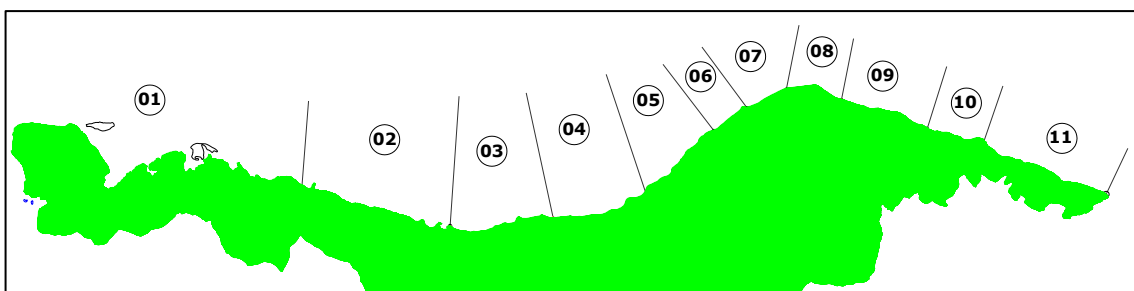


Figure 6. Sectional of Coastal Slope

Table 3. Section of Coastal Slope Value

Section	Slope	Section	Slope
01	1:20	07	1:12
02	1:23	08	1:12
03	1:18	09	1:11
04	1:27	10	1:11
05	1:20	11	1:13
06	1:13		

Source: Balai Wilayah Sungai Bali-Penida

Table 4. The Shifted Distance for Satellite Imagery of 2009

Section	Acquired Image Date	Acquired Image Time	T_k (m)	T_b (m)	T_x (m)	Slope	Y(m)
01	12-04-2009	02:32:45	2.2	2.6	1.4	20	20.31
02	12-04-2009	02:32:45	2.2	2.6	1.4	23	23.35
03	12-04-2009	02:32:45	2.2	2.6	1.4	18	18.28
04	12-04-2009	02:32:45	2.2	2.6	1.4	27	27.42
05	14-06-2009	02:22:45	2.2	2.6	1.9	20	11.85
06	14-06-2009	02:22:45	2.2	2.6	1.9	13	7.70
07	14-06-2009	02:22:45	2.2	2.6	1.9	12	7.11
08	14-06-2009	02:22:45	2.2	2.6	1.9	12	7.11
09	14-06-2009	02:22:45	2.2	2.6	1.9	11	6.52
10	14-06-2009	02:22:45	2.2	2.6	1.9	11	6.52
11	14-06-2009	02:22:45	2.2	2.6	1.9	13	7.70

Table 5. The Shifted Distance for Satellite Imagery of 2015

Section	Acquired Image Date	Acquired Image Time	T_k (m)	T_b (m)	T_x (m)	Slope	Y (m)
01	03-02-2015	09:09:27	2.2	2.6	1.7	20	15.23
02	03-02-2015	09:09:27	2.2	2.6	1.7	23	17.52
03	02-07-2015	09:11:00	2.2	2.6	2.4	18	3.05
04	02-07-2015	09:11:00	2.2	2.6	2.4	27	4.57
05	02-07-2015	09:11:00	2.2	2.6	2.4	20	3.38
06	02-07-2015	09:11:00	2.2	2.6	2.4	13	2.20
07	02-07-2015	09:11:00	2.2	2.6	2.4	12	2.03
08	02-07-2015	09:11:00	2.2	2.6	2.4	12	2.03
09	19-03-2015	09:18:35	2.2	2.6	2.1	11	4.65
10	19-03-2015	09:18:35	2.2	2.6	2.1	11	4.65
11	19-03-2015	09:18:35	2.2	2.6	2.1	13	5.50

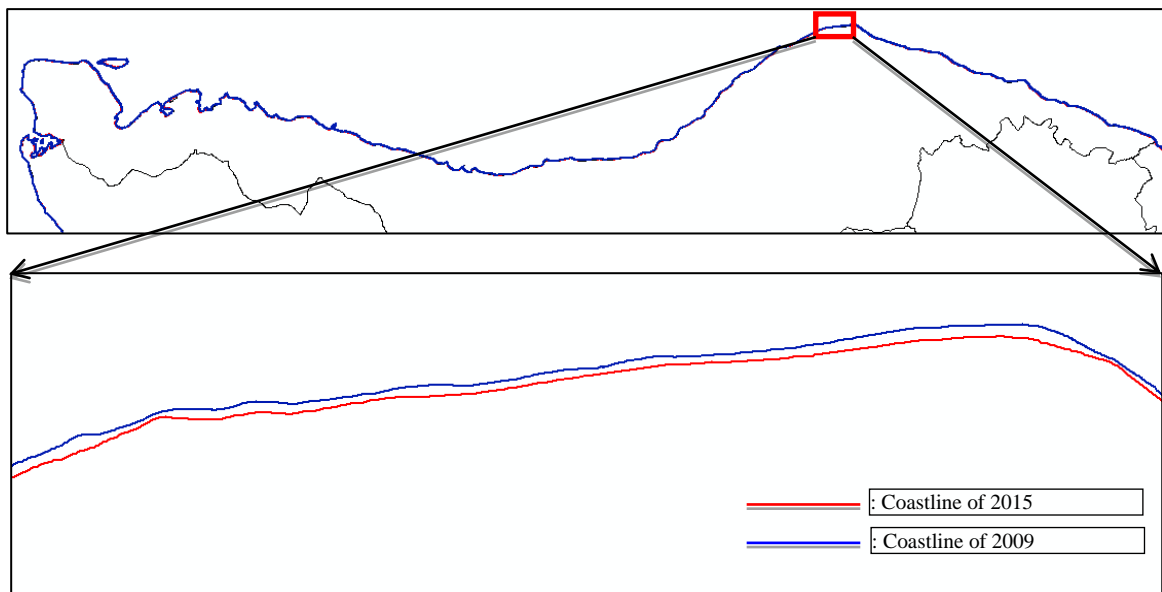


Figure 7. Coastline Map of 2009 and 2015

4. Coastline Changes Analysis

Coastline changes analysis was calculated based on overlapping method from 2009 and 2015 (Figure 6). Based on Figure 6, the length of coastline changes is indicated by A, B, C, D and E. The average of coastline changes (CR) in one area of coastal was estimated by:

$$CR = (A+B+C+D+E)/5 \quad (2)$$

Based on data from public work office, Buleleng Regency has 52 coastal areas stretching from west to the east of Bali islands. The average of coastal changes in each area can be seen on Table 6.

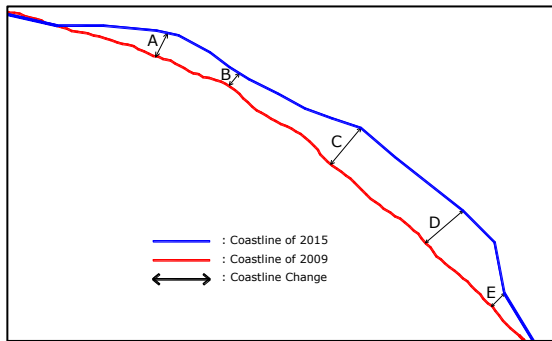


Figure 8. Coastline Changes Analysis Method

Table 6. The Average Coastline Change in Buleleng Regency

No	Coastal Area	Coastline Changes (m)
1	Sumber Kelampok (-Menjangan)	4.74
2	Pejarakan	2.13
3	Sumberkima	1.98
4	Pemuteran-Pulaki	3.05
5	Pulaki-Banyupoh	7.90
6	Gondol-Penyabangan	3.38
7	Musi	3.89
8	Sanggalangit	2.88
9	Gerokgak	9.08
10	Patas	6.35
11	Pengulon	5.58
12	Celukan Bawang	6.20
13	Kalisada	9.29
14	Banjar Asem	7.42
15	Umeanyar	11.13
16	Lokapaksa	6.73
17	Pengastulan	11.85
18	Seririt	7.14
19	Sulanyah	7.19
20	Tanggungwisia	8.80
21	Kalianget	7.61
22	Banjar	8.24
23	Dencarik	8.36
24	Temukus	6.34
25	Kaliasem	7.07
26	Kalibubuk	11.61
27	Anturan	9.79
28	Tukadmungga	12.42
29	Pemaron	8.79
30	Bhaktisegara	8.55
31	Banyuasri	8.04
32	Kaliuntu	6.06
33	Kampung Anyar	7.68
34	Kampung Bugis	11.89
35	Kampung Baru	6.61
36	Banyuning	6.62
37	Penarukan	9.36
38	Kerobokan	8.30
39	Sangsit	10.19
40	Bungkulan	13.56
41	Kubutambahan	16.11
42	Bukti	15.38
43	Pacung (Alasari)	13.91
44	Sembiran	12.19
45	Pacung	7.76
46	Julah	6.22
47	Bondalem	10.59
48	Tejakula	15.73
49	Les	9.89
50	Penukatan	7.22
51	Sambirenteng	9.29
52	Tembok	11.88
Average		8.46

D. RESULTS AND DISCUSSION

Coastline changes occurred in Buleleng regency based on SPOT satellite imagery in 2009 and 2015. The average coastline changes in Buleleng Regency are 8.46 m (Table 6). The entire coastal area in Buleleng Regency has changed coastline. The highest coastline changes occur in Kubutambahan coastal area which is 16.11 m, while the smallest change occurred in Sumerkima coastal area which is 1.98 m.

The results of this study demonstrate that coastal movement (erosion) has caused coastline changes at the Buleleng Regency. In Buleleng Regency there is no scientific research on coastal inventory and coastline changes analysis that includes all coasts of Buleleng Regency.

E. CONCLUSION

The coastlines processing by using satellite images in 2009 and 2015 were overlaid to establish the average of coastline changes in Buleleng Regency. The average coastline changes in Buleleng Regency are 8.46 m.

ACKNOWLEDGMENT

The author would like to thank RISTEK DIKTI for support the research grant. Also thank to Balai Wilayah Sungai Bali Penida for supporting satellite data, Department of Public Work Buleleng Regency for supporting name of coastal area.

REFERENCES

- Anonim. (2016). Retrieved Mei 22, 2016, from <https://petatematikindo.files.wordpress.com/2013/03/administrasi-buleleng-a11.jpg>
- Aryastana, P., Eryani, I. A., & Candrayana, K. W. (2016). Perubahan Garis Pantai dengan Citra Satelit di Kabupaten Gianyar. *PADURAKSA*, 5(2), 70-81.
- Belliss, S. (2017). Retrieved September 2, 2017, from LANDCARE RESEARCH: <https://www.landcareresearch.co.nz/resources/maps-satellites/remote-sensing-and-image-processing/digital-image-processing/band-combinations-and-wavelengths>
- BPS. (2015). Retrieved September 2, 2017, from Badan Pusat Statistik Kabupaten Buleleng: <https://bulelengkab.bps.go.id/>
- Caballer, J. A., García, E. S., Pascual, J. E., Beser, A. A., & Vázquez, J. P. (2016). Evaluation of Annual Mean Shoreline Position Deduced from Landsat Imagery as a Mid-

- term Coastal Evolution Indicator. *Marine Geology*(372), 79-88.
- Dave, C. P., Joshi, R., & Srivastava, S. (2015). A Survey on Geometric Correction of Satellite Imagery. *International Journal of Computer Applications*, 116(12), 24-27.
- El-Asmar, H., & Hereher, M. (2011). Change Detection of The Coastal Zone East of The Nile Delta. *Environ Earth Sci*(62), 769–777.
- Ford, M. (2013). Shoreline Changes Interpreted from Multi-temporal Aerial Photographs and High Resolution Satellite Images: Wotje Atoll, Marshall Islands. *Remote Sensing of Environment*(135), 130-140.
- Guariglia, A., Buonamassa, A., Losurdo, A., Saladino, R., Trivigno, M. L., Zaccagnino, A., et al. (2006). A Multisource Approach for Coastline Mapping and Identification of Shoreline Changes. *ANNALS OF GEOPHYSICS*, 49(1), 295-304.
- Heliani, L. S., Putra, I. K., & Subaryono. (2014). The Evaluation of the Result of Post-Processing Envisat Satellite Altimetry Data Used for Coastal Area Potential Flood Mapping(Case Study: Coastal Area of Buleleng Regency, Bali, Indonesia). *The 4th International Conference on Sustainable Future for Human Security, SUSTAIN 2013* (pp. 651-657). Kyoto: Procedia Environmental Sciences.
- Kasim, F. (2012). Some Approaching Methods in Coastline Change Monitoring Using Remote Sensing Dataset of Landsat and GIS. *Jurnal Ilmiah Agropolitan*, 5(1), 620-635.
- Kuleli, T., Guneroglu, A., Karsli, F., & Dihkan, M. (2011). Automatic Detection of Shoreline Change on Coastal Ramsar Wetlands of Turkey. *Ocean Engineering*(38), 1141-1149.
- Li, X., & Damen, M. C. (2010). Coastline Change Detection with Satellite Remote Sensing for Environmental Management of the Pearl River Estuary, China. *Journal of Marine Systems*(82), S54–S61.
- Liu, Y., Huang, H., Qiu, Z., & Fan, J. (2013). Detecting Coastline Change from Satellite Images based on Beach Slope Estimation in a Tidal Flat. *International Journal of Applied Earth Observation and Geoinformation*(23), 165-176.
- Rubio, G. G., Huntley, D., & Russell, P. (2015). Evaluating Shoreline Identification Using Optical Satellite Images. *Marine Geology*(359), 96-105.
- Stow, D. A. (2017). *Radiometric Correction of Remotely Sensed Data*. San Diego: San Diego State University.